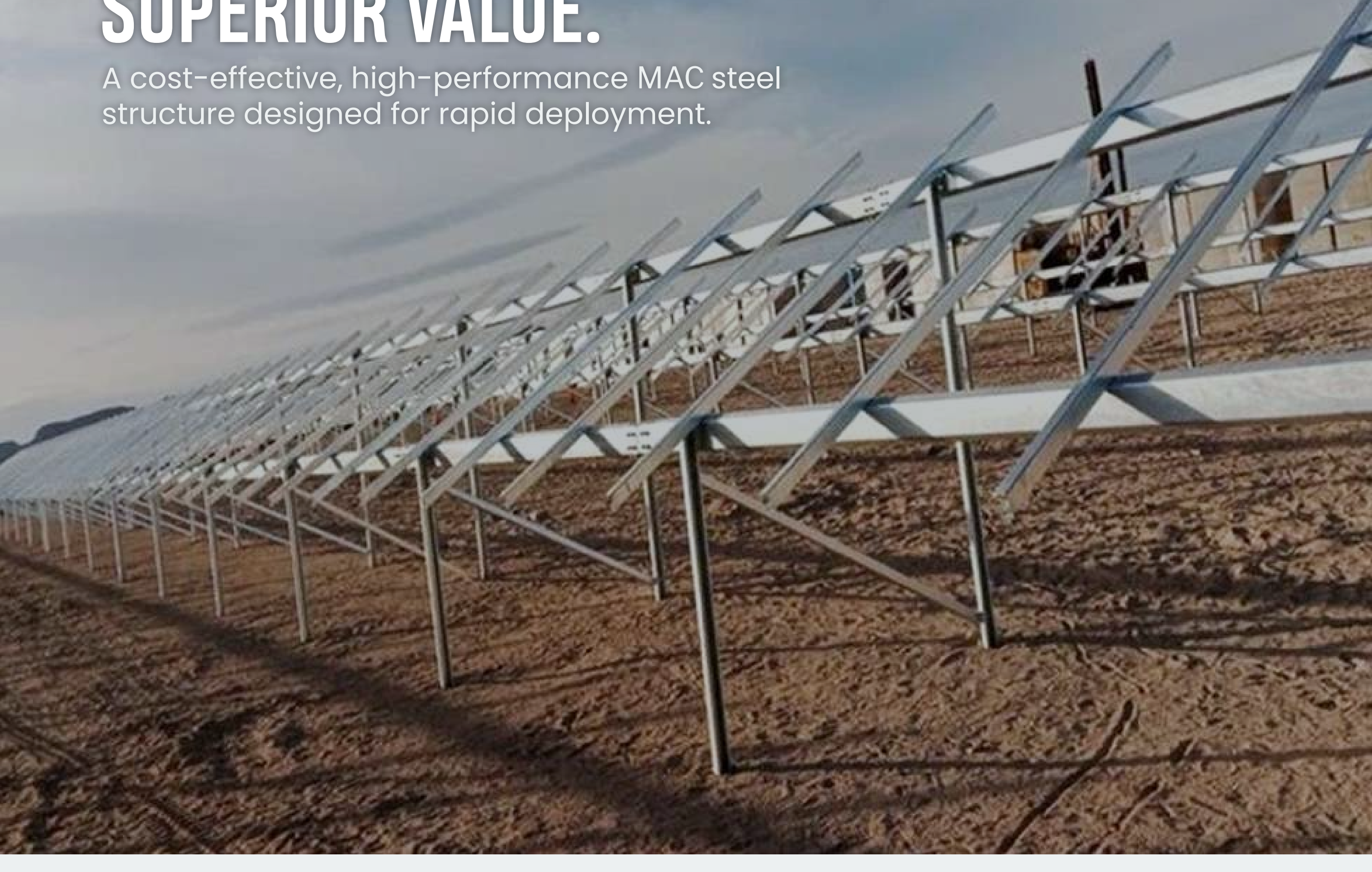


GROUND MOUNT SOLAR STRUCTURE: PROFESSIONAL STRENGTH, SUPERIOR VALUE.

A cost-effective, high-performance MAC steel structure designed for rapid deployment.



MODULAR STRUCTURE TAILORED TO YOUR SPECIFIC PROJECT:



Cost-Efficient:
Highly competitive pricing compared to aluminum without sacrificing structural integrity.



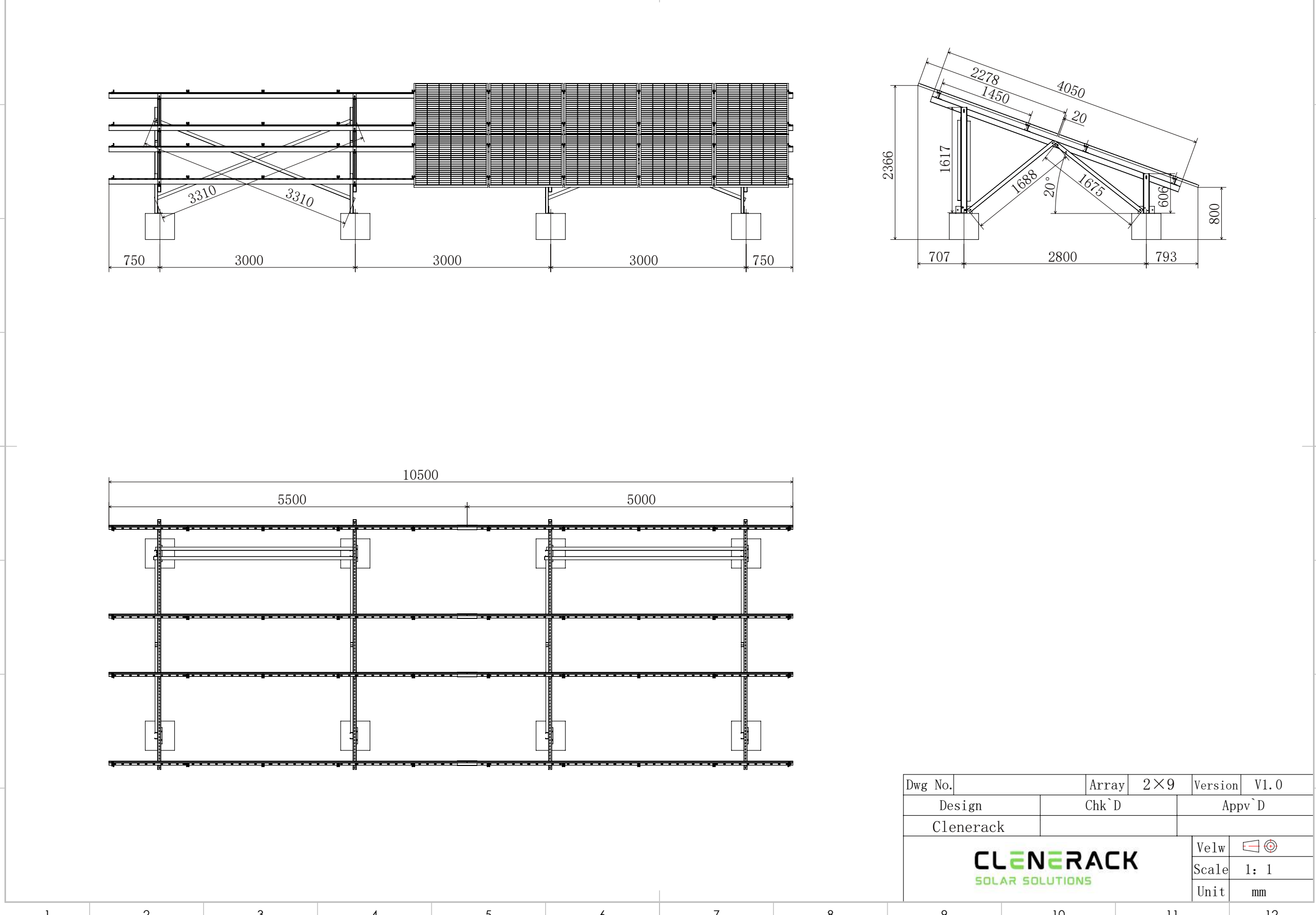
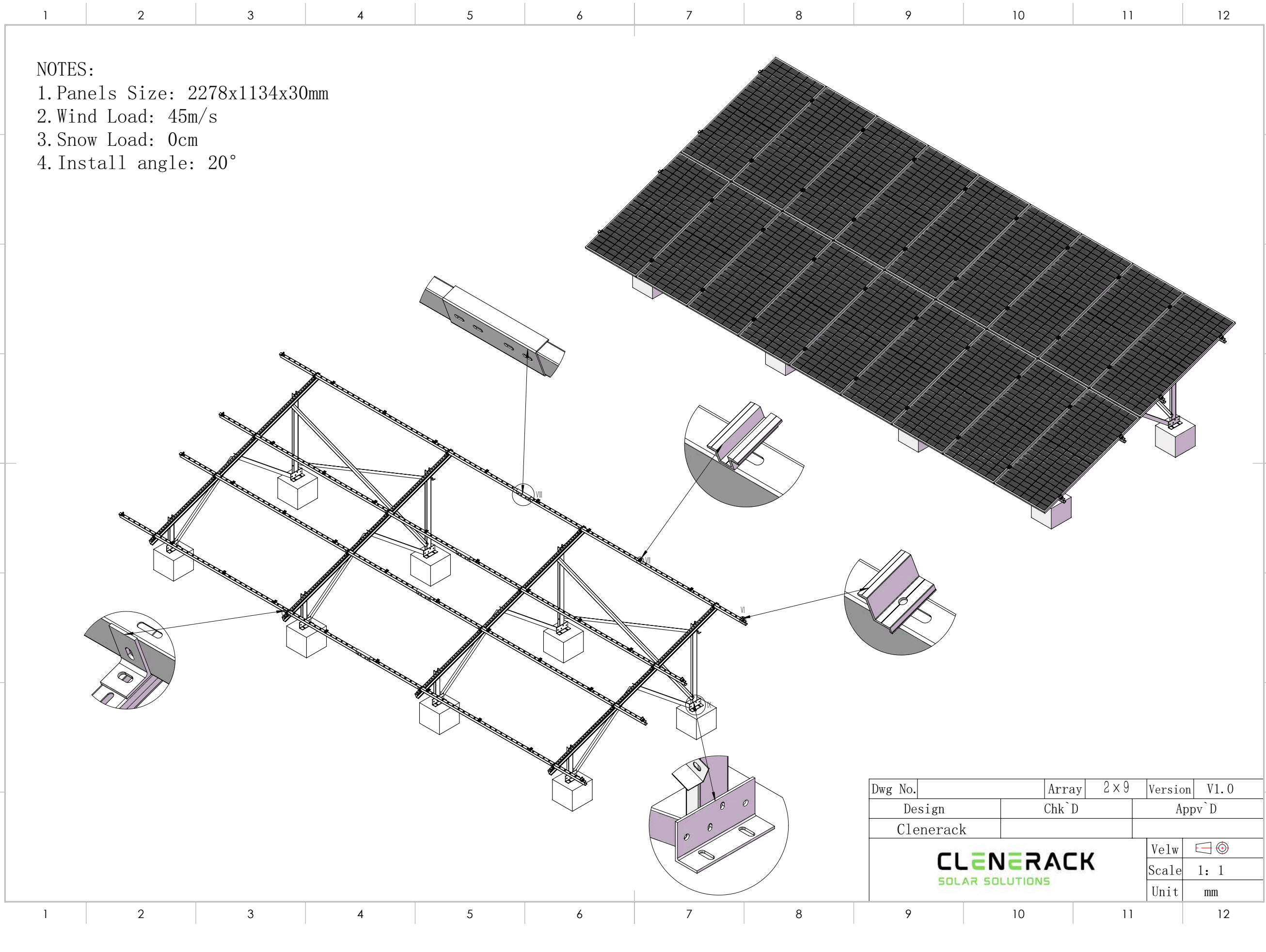
Rapid Installation:
Pre-drilled components for a fast, no-weld assembly.



Built for Extremes:
Certified to withstand wind loads of up to 45m/s.

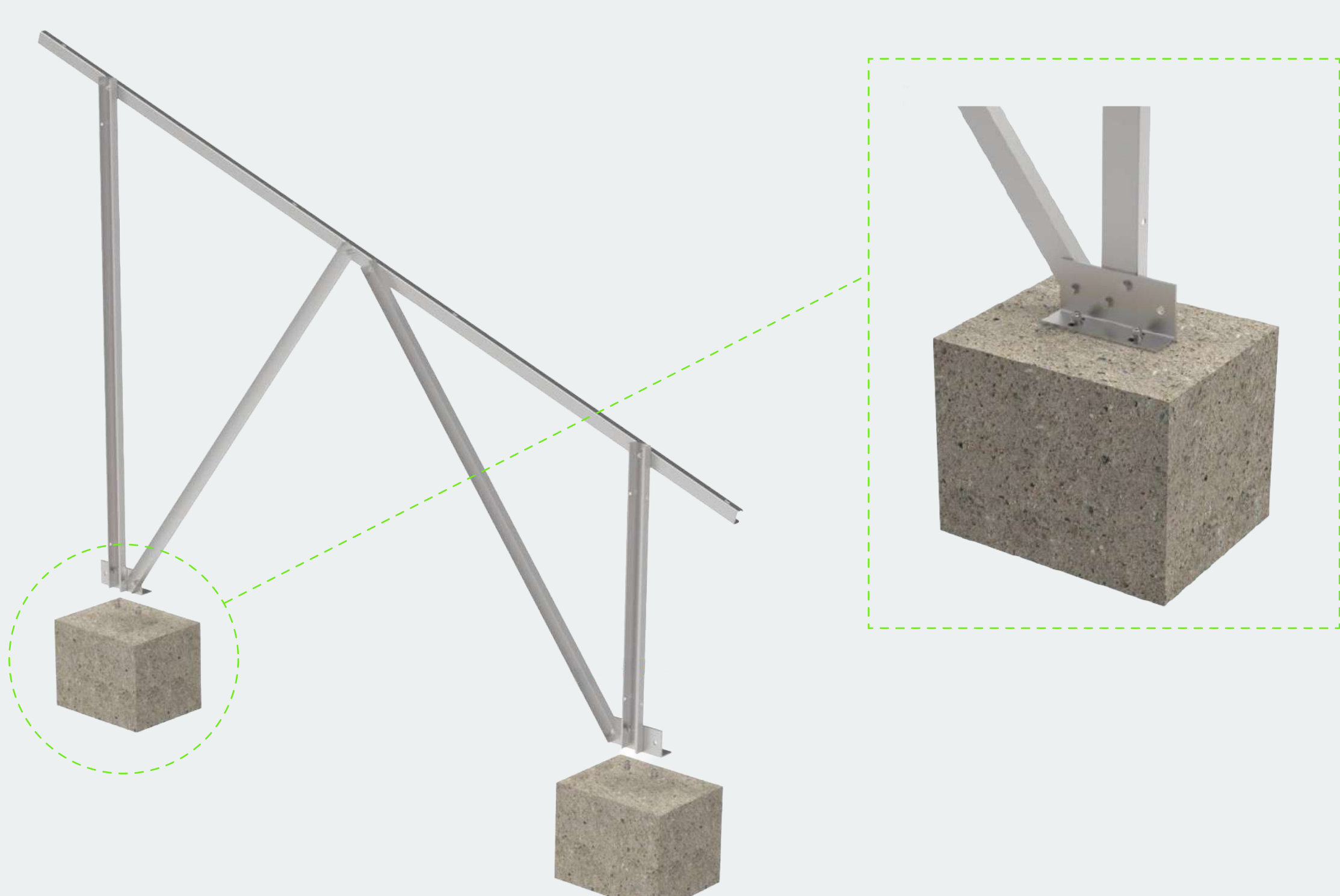
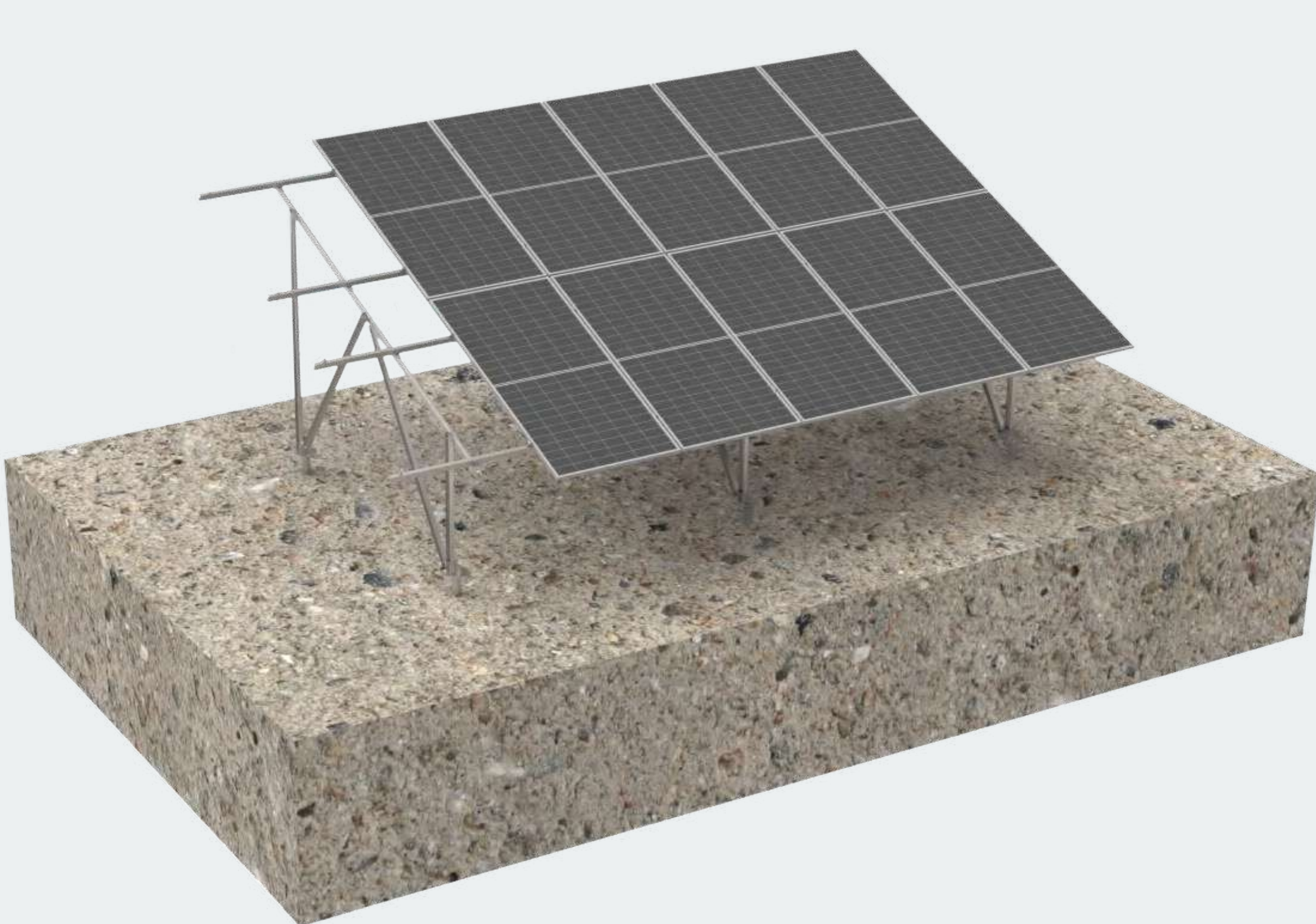
TECHNICAL PRECISION

Precision-engineered to support 18 panels (2P x 9, portrait) with reliable structural integrity. Corrosion-resistant materials and SUS 304 fasteners, certified for 45 m/s wind loads.



INSTALLATION GUIDE: CONCRETE FOOTINGS

Recommended footing dimensions: 450MM (w) x 450mm (l) x 500m (h).
Requires a concrete strength of 25MPA.



* For perfect alignment, we recommend drilling foot plate holes after the concrete has cured for 7 days. Use chemical anchors with a minimum depth of 150mm.

**READY TO POWER
YOUR NEXT PROJECT?**
GET A CUSTOM QUOTE TODAY.

ryan@clenerack.co.za
admin@clenerack.co.za
021 001 3790