



FL-AC/10 FL-AC/15
Front Leg 10°/15°

Click in installation, manufactured from aluminum offer excellent corrosion resistance.



RL-AC/10
Rear Leg 10°



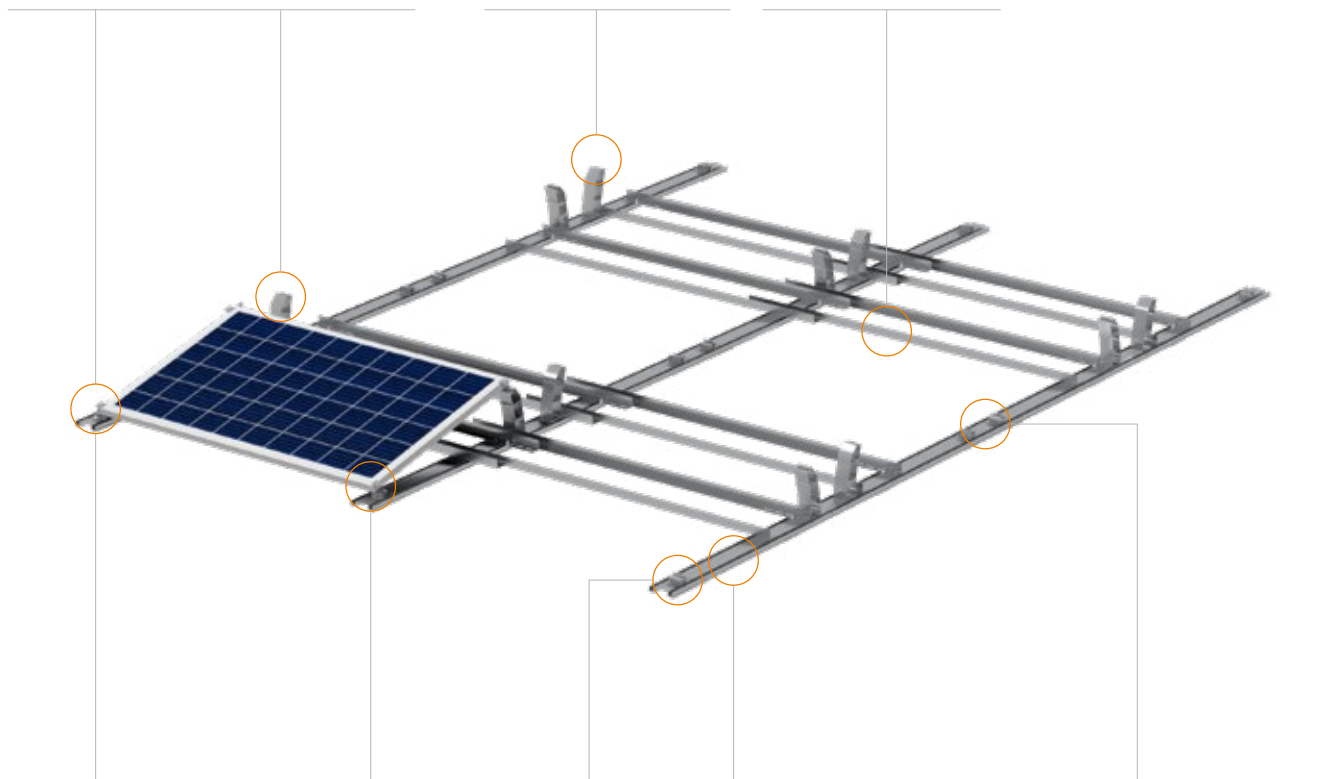
RLE-AC
Rear Leg Extension

Rear Leg Extension can be easily attached with Rear Leg 10° with a single screw, to achieve 15°.



ER-AA-50/XXXX/50
Angle AL

With a simple and robust design, this component efficiently fixes the ballast to the mounting structure.



EC-M
End Clamp



IC-M
Inter Clamp

The PV-ezRack Inter and End clamps offer a simple, easy to use and robust fixing of the PV panels.



SEB-AC/120
Start and End Base L120



MB-AC/SN
Main Base, South-north

With pre-fitted rubber pad. The Base is not attached to the roof surface to allow for water drainage.



CB-AC/EW
Connection Base, East- west